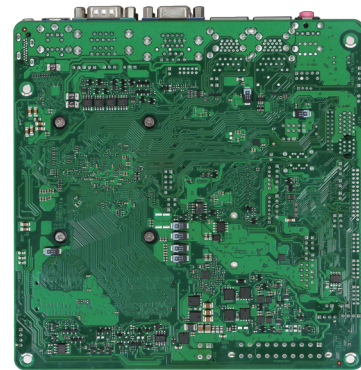
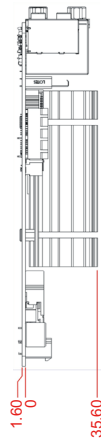
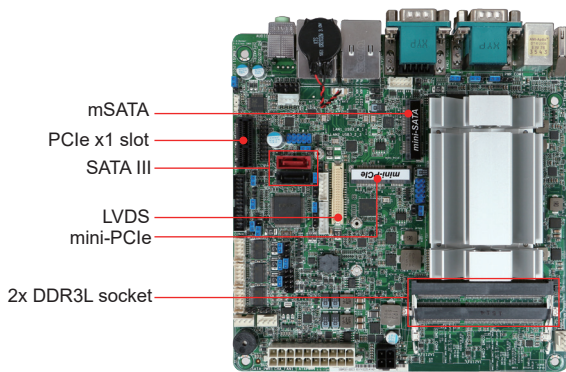


# WADE-8171 Intel® Celeron® Processor N3150/N3160 Based Mini-ITX Board with VGA, HDMI, LVDS, Dual GbE, USB 3.0, SATA III, mini-PCIe, and mSATA

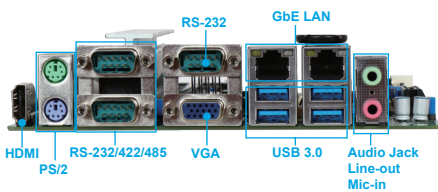


WADE-8171 is based on Intel® Celeron® processor N3160. With dual-channel DDR3L memory and rich I/O sets, WADE-8171 empowers energy-efficient solutions for point-of-sale (POS) and industrial automation applications.

## FEATURES

- Intel® Pentium®/Celeron® Braswell SoC Processor
- Supports Dual Channel DDR3L 1333/1600 MT/s, 2 x SO-DIMM, up to 8GB system memory
- 1x HDMI, 1x D-Sub, 1x Dual Channel 24-bit LVDS
- 4x USB 3.0, 4x USB 2.0, 2x SATA III ports
- Supports 1 x mini-PCIe, 1 x mSATA(shared)

## REAR I/O



## ORDERING GUIDE

<b>AB1-3D63</b>	(R)WADE-8171-N3150 Mini-ITX ESB.Intel® Braswell Quad Core Celeron® 2.08GHz (6W). w/DDR3L/VGA/LVDS/ HDMI/dual GbE LAN/SATA
-----------------	--

## PACKING LIST

1x WADE-8171 motherboard
1x I/O shield
1x SATA cable
1x Driver CD

## GENERAL

Processor	Intel® Celeron® processor N3160 in FCBGA1170 package, 1.6 GHz (2.08 GHz turbo), 2 MB, 6W TDP (4C/4T)
Chipset	Integrated
BIOS	AMI UEFI BIOS
Memory	Support up to 8 GB DDR3L 1600/1333 MT/s memory (non-ECC) on 2x 204-pin SO-DIMM socket
Storage Devices	- 2x SATA III ports - 1x mSATA (shared with SATA III)
Watchdog Timer	Programmable watchdog timer, time out period from 1 sec to 255 secs.
Hardware Monitoring	- Temperature (CPU & System) - Voltages (CPU Vcore, 12V, 5V, 3.3V, RAM)
Expansion Interface	- 1x PCIe 2.0 x1 slot - 1x full/half-size mini-PCIe socket (USB + PCIe x1 signal) - 1x full size mini-PCIe socket (support mSATA)

## I/O INTERFACE

Super I/O	NCT61060
Audio	Intel® High Definition Audio interface Realtek® ALC887 High Definition Audio 1x jumbo jack support Line-out/Mic-in
Ethernet	2x RJ45 connectors on rear I/O (Realtek® RTL8111G)
Serial port	- 2x RS-232/422/485 on rear I/O (selectable by BIOS) - 1x RS-232 on rear I/O - 3x RS-232 on pin header (2.00 mm pitch)
USB	- 4x USB 3.0 ports on rear I/O - 4x USB 2.0 ports on pin header (2.54mm pitch)
GPIO	8-bit GPI/GPO

## DISPLAY

Graphic Controller	- Integrated Intel® Generation 8 Graphics - Supports DirectX 11.1, OpenGL® 4.2, OpenCL® 1.2
Display Interface	- LVDS: dual channel 24bit LVDS on board connector, up to 1920x1200 - HDMI: up to 3840x2160 - VGA: up to 1920 x 1200 , on rear I/O

## Mechanical & Environment

Dimension	170mm(L) x 170mm(W); 6.69"(L) x 6.69"(W)
Power Supply	12V DC input
Environment	- Operation temperature: 0°C~60°C - Storage temperature: -20°C~80°C - Relative humidity: 5%~95%, non-condensing
MTBF	Over 120,000hrs at 40°C

