

# ROBO-N100P

Fast Ethernet extension module with Portwell OmniPCI™ connection interface



ROBO-N100P is a daughter board for Portwell Pentium® 4 processor based SBCs (eg. ROBO-8710VLA, ROBO-8712VLA) with special PCI connection interface. It provides additional high performance Fast Ethernet function to Single Board Computers. This module can be factory optional item or an additional item for customer's order later on. The board is based on Intel® 82559 Fast Ethernet controller. It is designed in the most compact form factor, which makes this board taking minimum space upon the SBC. All in all, ROBO-N100P is a flexible item for more versatile factory configuration or an additional add-on module for function extension.

## FEATURE

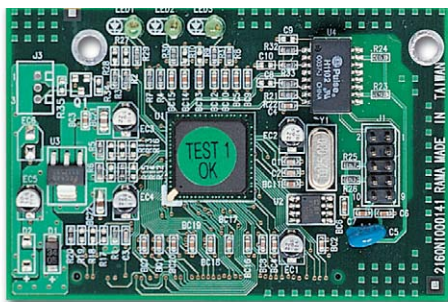
- For Intel® Pentium® 4 processor based SBC
- Adaptec AIC7892 SCSI Ultra 160/m controller
- Compact sized
- Proprietary PCI connector for piggy back (board to board) connection
- Fully PCI Bus spec. V2.1 compliant
- One Ethernet RJ-45 daughter board and one daughter card
- Support IEEE 802.3
- Auto-negotiation algorithm of full-duplex and half-fuplex operation for 10 Mb/s (NWAY)
- Dimension: 77(L) x 52(W) mm

## Ordering Information

<b>Standard</b>	<b>ROBO-N100P</b> Fast Ethernet extension module with Portwell OmniPCI™ connection interface (P4 solution)
-----------------	---

# ROBO-N100

Fast Ethernet extension module with Portwell OmniPCI™ connection interface



ROBO-N100 is a daughter board for Portwell SBCs (eg. ROBO-668, ROBO-678) with special PCI connection interface. It provides additional high performance Fast Ethernet function to Single Board Computers. This module can be factory optional item or an additional item for customer's order later on. The board is based on Intel® 82559 Fast Ethernet controller. It is designed in the most compact form factor, which makes this board taking minimum space upon the SBC. All in all, ROBO-N100 is a flexible item for more versatile factory configuration or an additional add-on module for function extension.

## FEATURE

- Intel® 82559
- Compact sized
- Proprietary PCI connector for piggy back (board to board) connection
- Fully PCI Bus spec. V2.1 compliant
- One Ethernet RJ-45 daughter board and one daughter card
- Support IEEE 802.3
- Auto-negotiation algorithm of full-duplex and half-fuplex operation for 10 Mb/s and 100Mb/s (NWAY)
- Dimension: 77(L) x 52(W) mm

## Ordering Information

<b>Standard</b>	<b>ROBO-N100</b> Fast Ethernet extension module with Portwell OmniPCI™ connection interface
-----------------	--