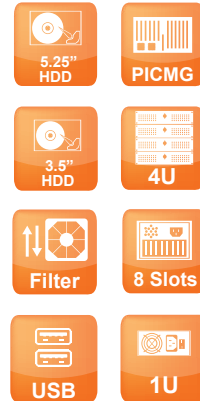


# AREMO-4184

19" 4U Height rack-mount chassis  
with dual AREMO-6182 node chassis



AREMO-4184 combines double AREMO-6182 with dual system frame that lets double AREMO-6182 become 19" 4U Rack-mount size chassis designed for PICMG 1.0/1.3. It is built with one 5.25" HDD driver space for CD/DVD-ROM, one internal 3.5" HDD driver bays and replaceable air filter for easy maintenance in each AREMO-6182 which also equips two USB interface on front panel, and also high wattage 1U form factor PSU.

## FEATURES

- Magic design for wall-mount, desk-top and rack-mount application
- Ruggedized steel node chassis suitable for harsh environment
- One built-in 12cm ball-bearing fan for better ventilation
- Built-in 1U ATX type power supply
- Support one external 5.25" and one internal 3.5" disk drive
- Optional one external 5.25" and one internal 3.5" disk drive
- Optional kit to combine two AREMO-6182 for the rack-mount application, AREMO-4184



AREMO-6182

## ORDERING GUIDE

- **AREMO-4184**  
Two sets of AREMO-6182 with black rack-mount kit, adapted with 6-slot PICMG backplane

## GENERAL

Construction	Heavy-duty steel
Drive Bay	External: 1x 5.25" Internal: 2x 3.5"
Card Retainer	Two locations for one card retainer
Air Filter	One replaceable air filter at the front door
Cooling Fan	One 12cm ball-bearing fan
Indicator	1x Power On/Off, 1x HDD
Switch	1x Power On/Off (with a protection cap) , 1x System reset
Speaker	One 8Ω speaker
Connector	2 USB ports
Standard Color	Black
Dimension	AREMO-4184: 482(W) x 448(D) x 177(H) mm; 19"(W) x 17.6"(D) x 7"(H)
Weight	AREMO-6182: Net: 6.5 kg (14.3 lb); Gross: 8.0 kg (17.6 lb) AREMO-4184: Net: 15.5 kg (34.2 lb); Gross: 17.5 kg (38.6 lb)
Backplane	PBP-06P3: 6-slot (3xPCI) PICMG backplane PBP-06P4: 6-slot (4xPCI) PICMG backplane PBP-06I: 6-slot (6xISA) PICMG backplane

\* each chassis

## POWER SUPPLY

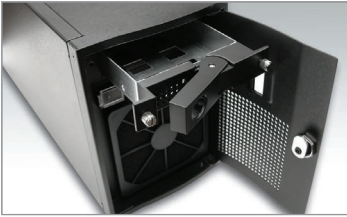
Maximum output	350W active PFC
Output Voltage & Current	+5V@18A; +12V1@16A; +12V2@16A; +3.3V@16A; -12V@0.3A, -5V@0.3A, +5Vsb@2.5A
Input Voltage	90V ~ 264V AC, full range
Input Frequency	47 ~ 63Hz
Input Current	6A@115V, 3A@230V
Efficiency	> 80%
MTBF	100,000 hrs
EMI & Safety Approval	UL, TUV, CE, FCC, CB
Temperature/Humidity	Operating: 0°C ~ 50°C, 5% ~ 90%RH Storage: -20°C ~ 80°C, 5% ~ 95%RH

## ENVIRONMENT

Operating Temperature	0°C ~ 55°C
Storage Temperature	-20°C ~ 80°C
Relative Humidity	5% ~ 95%, non-condensing
Vibration	5~7 Hz: 0.5" double amplitude displacement 7~2000 Hz: 1.5g acceleration

FEATURE	BENEFITS
<ul style="list-style-type: none"> <li>One 5.25" drive bay for EZDRV</li> </ul>	<ul style="list-style-type: none"> <li>For both CD-ROM and FDD support or Hot-swappable HDD</li> </ul>
<ul style="list-style-type: none"> <li>Front replaceable air filter</li> </ul>	<ul style="list-style-type: none"> <li>Easy cleaning &amp; replacing</li> </ul>
<ul style="list-style-type: none"> <li>Two adjustable positions for hold-down card retainer</li> </ul>	<ul style="list-style-type: none"> <li>For fixing all the cards more flexibly and tightly</li> </ul>
<ul style="list-style-type: none"> <li>Both 6-slot ISA and PICMG backplane applicable</li> </ul>	<ul style="list-style-type: none"> <li>Easy to change to different backplane and keep in stock</li> </ul>
<ul style="list-style-type: none"> <li>1U 350W ATX power supply</li> </ul>	<ul style="list-style-type: none"> <li>Save the space inside the chassis</li> </ul>
<ul style="list-style-type: none"> <li>Special kit to combine dual systems into 4U space</li> </ul>	<ul style="list-style-type: none"> <li>Can be integrated as a fault tolerant system</li> </ul>

## REFINEMENT



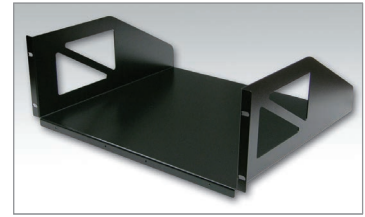
### Special Configuration with EZDRV

AREMO-6182 adopts EZDRV-300NCF or mobile rack for 3.5" HDD



### Easy to Mount

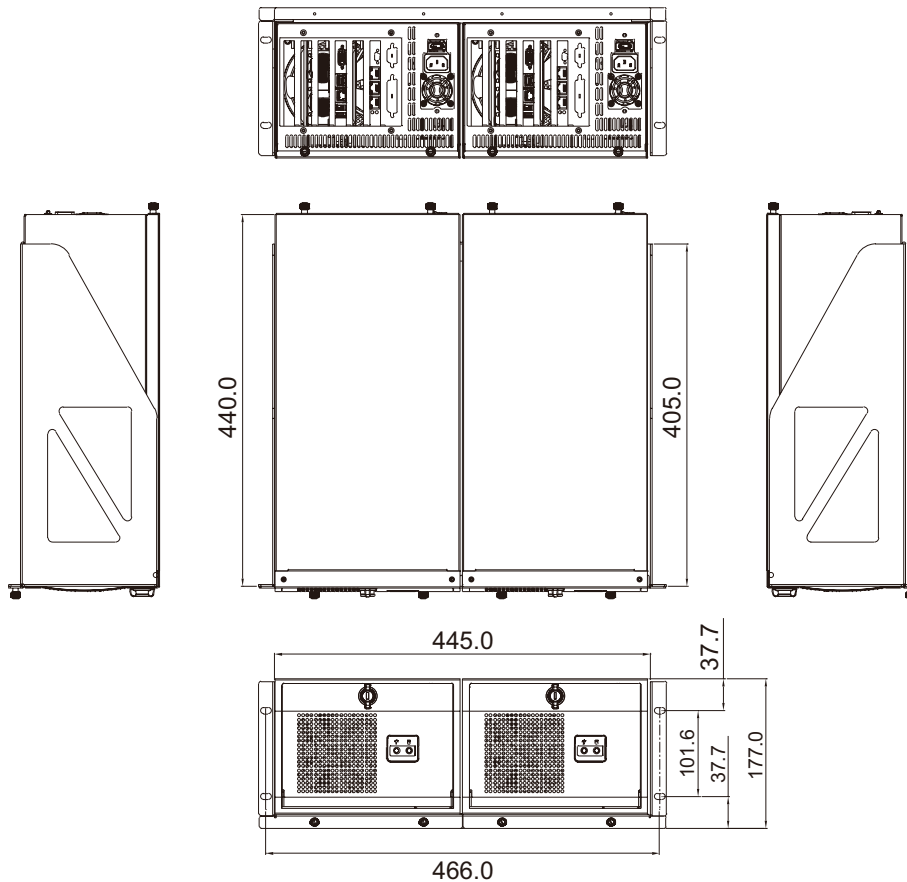
AREMO-6182 can be easily mounted on the supporter



### Two become One

Combine two AREMO-6182 as a dual system 4U chassis

## MECHANICAL DRAWING



Unit: mm